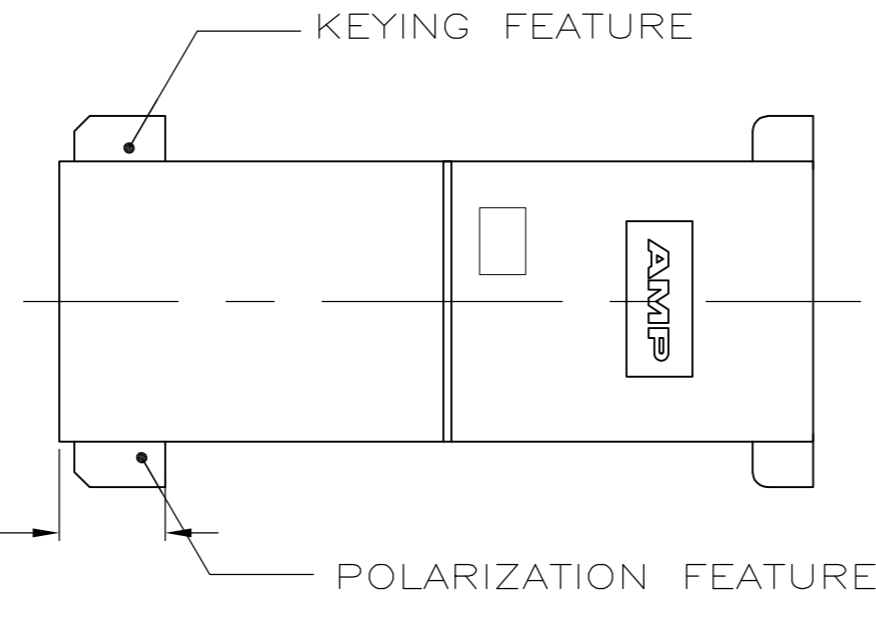
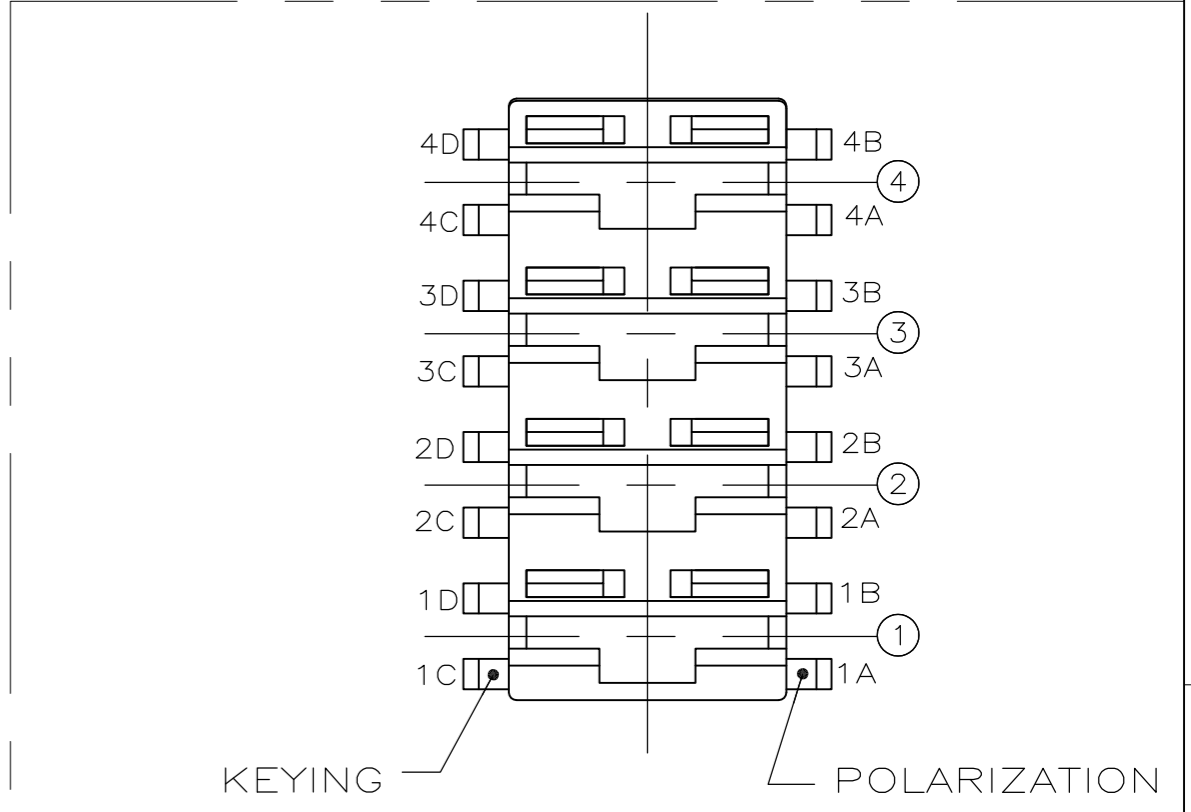
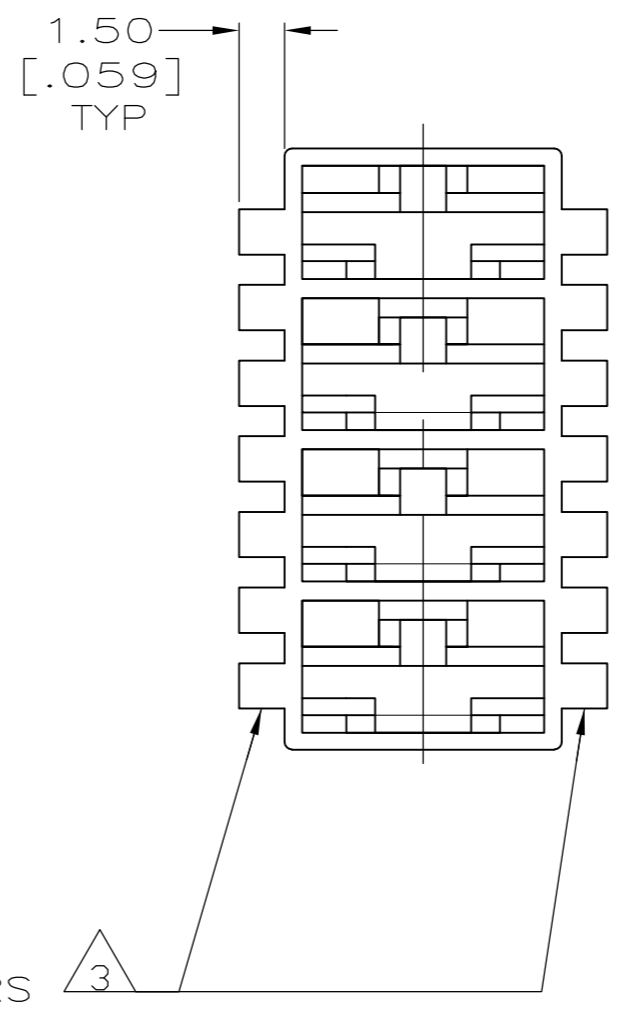
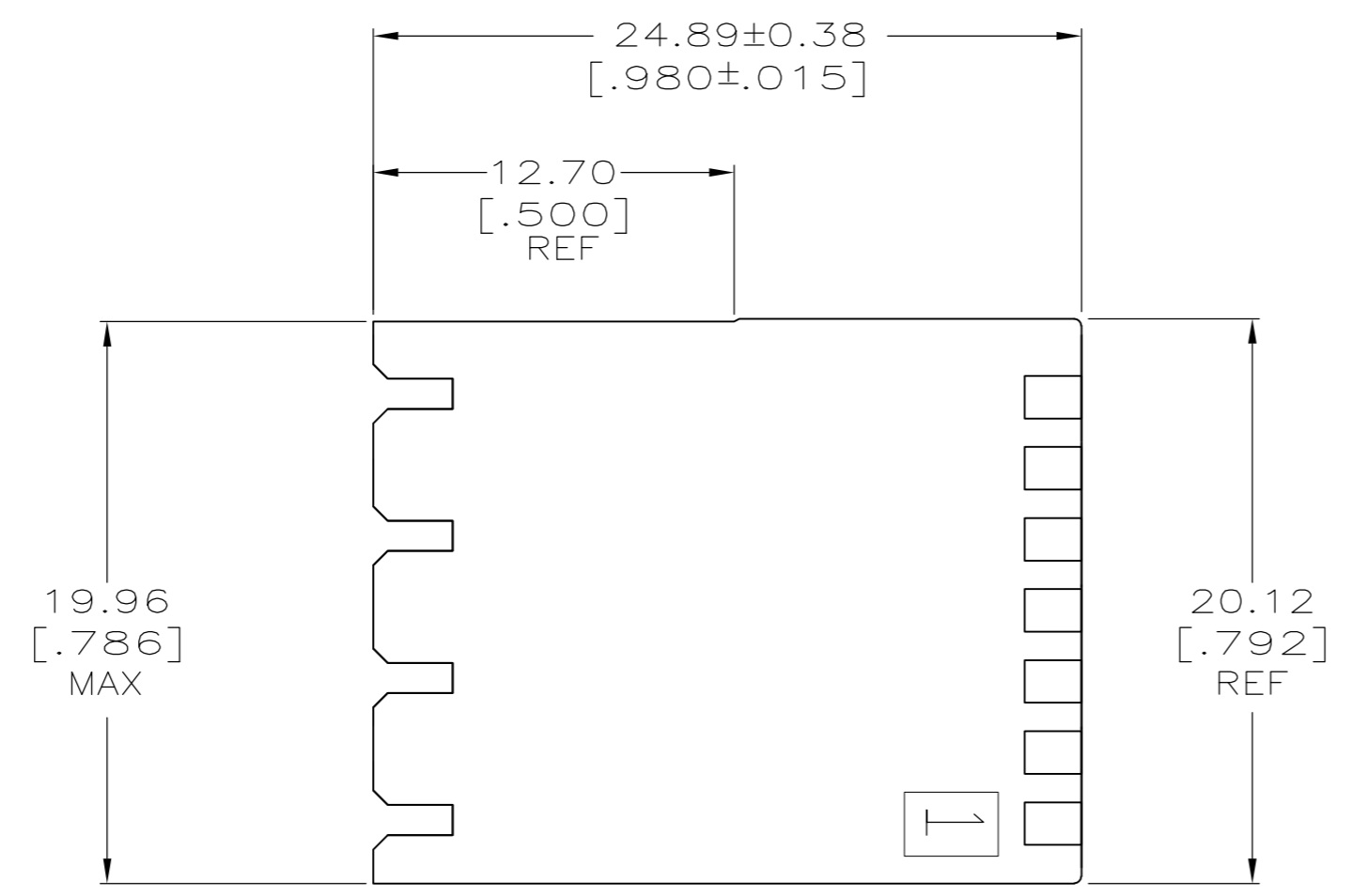
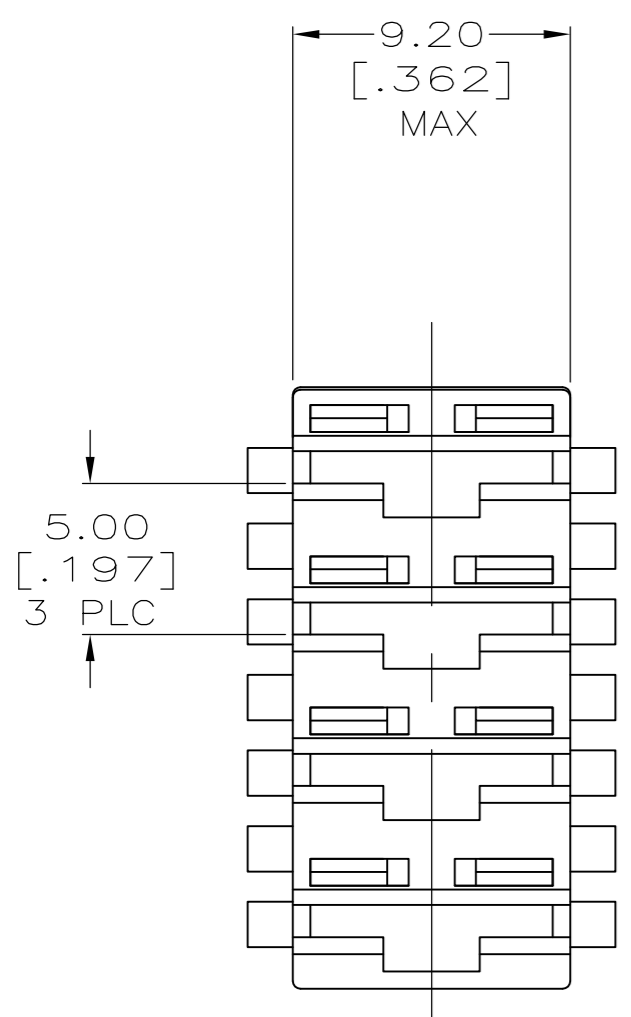


THIS DRAWING IS UNPUBLISHED. RELEASED FOR PUBLICATION
 © COPYRIGHT - TE Connectivity ALL RIGHTS RESERVED.

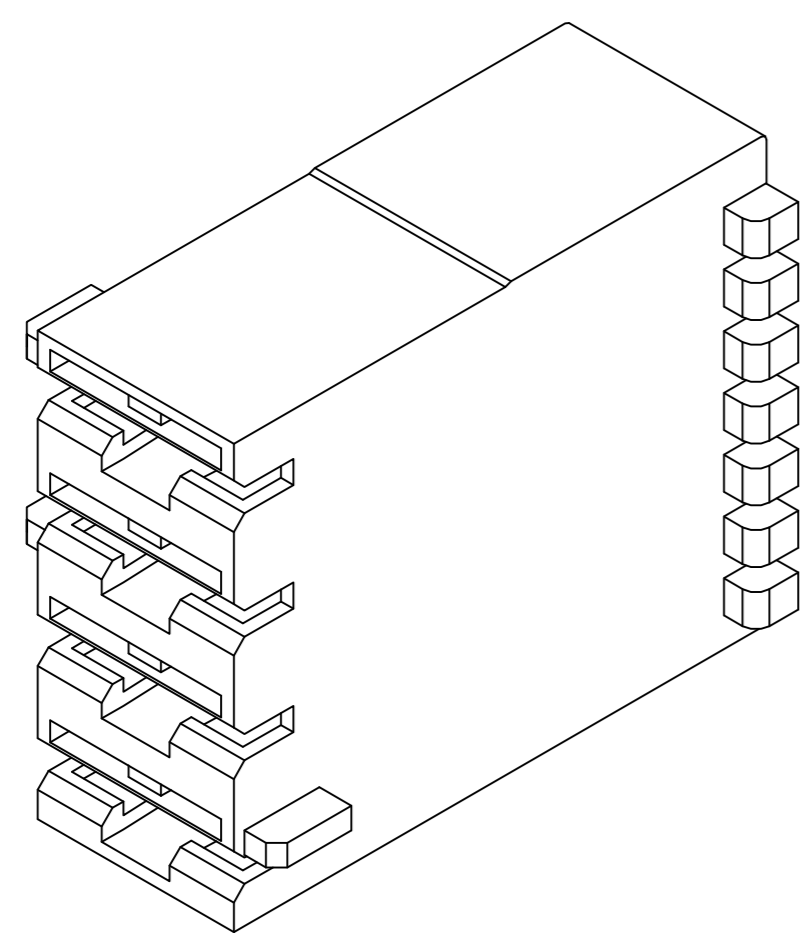
LOC	DIST	REVISIONS			
P	LTR	DESCRIPTION	DATE	DWN	APVD
AF	50	REVISED PER ECR-16-001902	22MAR2016	BW	JP



- 1 ACCEPTS RECEPTACLE CONTACTS 1217378(#18-#22 AWG SINGLE WIRE), 1217094(#18-#14 AWG SINGLE WIRE) AND 1217095 (TWO #18'S OR TWO #16'S OR A #16 + #18 COMBINATION).
- 2 FRONT AND BACK VIEWS SHOW ONLY THE GRIPPERS. FOR KEYING AND POLARIZATION FEATURES, SEE SPECIAL FRONT VIEW.
- 3 MOLDED WITHOUT GRIPPERS.
- 4 PRELIMINARY - NOT FOR PRODUCTION.
- 5 PA6, GWPT 750°C NO FLAME.
- 6 PRE-PRODUCTION - FASR REQUIRED



KEYING & POLARIZATION CODING AND COMBINATIONS
SPECIAL FRONT VIEW



3D VIEW

04-A	NATURAL	3C,4D	1B	521206-7 ⁵
-	BLUE	1C,2C,3C,4D	1A,1B,2A,3B,4A,4B	4 ⁴ 521206-6
04-C	BLUE	4D	1A,4B	4 ⁴ 521206-5
-	BLUE	NONE	NONE	4 ⁴ 521206-4
-	NATURAL	3C,4D	1B	6 ⁶ 521206-3
-	BLUE	NONE	NONE	4 ⁴ 521206-2 ³
04-A	BLUE	3C,4D	1B	521206-1
RAST CONFIGURATION	FINISH/COLOR	KEYING FEATURE	POLARIZATION FEATURE	PART NUMBER

THIS DRAWING IS A CONTROLLED DOCUMENT.		DWN	JR RUTH	10/20/98		TE Connectivity		
DIMENSIONS: mm		CHK	MS FEHER	10/20/98		NAME		
TOLERANCES UNLESS OTHERWISE SPECIFIED:		APVD	E HOWARD	10/20/98		HOUSING, RECEPT, POSITIVE-LOCK, MKIII, 6.35 [.250] SERIES, 4 POSITION		
0 PLC ± - 1 PLC ± - 2 PLC ± 0.25 [.010] 3 PLC ± - 4 PLC ± - ANGLES ± -		PRODUCT SPEC		APPLICATION SPEC		RESTRICTED TO		
MATERIAL	NYLON	FINISH	SEE TABLE	WEIGHT	-	SIZE	A2	
CUSTOMER DRAWING		SCALE		4:1	SHEET	1 OF 1	REV	G